

## G10 Series

Subminiature Micro Switch



### ■ Features

- ◆ Small Compact Size
- ◆ Long Life and High Reliability
- ◆ Variety of Terminals
- ◆ Variety of Levers Optional
- ◆ Widely used in Appliance and Industry Control

### ■ Application

- ◆ Waikie Talkie
- ◆ Mouse
- ◆ Electric Knife
- ◆ Electric Stapler
- ◆ Telephone
- ◆ Calculator
- ◆ Mixer & Chopper
- ◆ Electric Pan
- ◆ Battery Charger
- ◆ Video Cassette Rewinder
- ◆ Cordless Phone
- ◆ Alarm
- ◆ Tester Machine
- ◆ Home Appliance

### ■ Parameters:

Rating	P1	0.1A 48VDC/125VAC (Gold plated optional)
	03	1A/3A 125VAC
Operating Frequency	Electrical	10~30 cycles/minute
	Mechanical	120 cycles/minute
Contact Resistance (Initial Value)		100mΩ Max (Depends on P/Ns)
Insulation Resistance (at 500 VDC)		At 500VDC, 100MΩ Min
Dielectric Strength		AC 600V RMS (50~60HZ)
Storage Temperature		-40°C ~ +85°C
Storage Humidity		85%RH Max
Service Life	Electrical	6,000~100,000 cycles (Depends on P/Ns)
	Mechanical	1,000,000 cycles (5,000,000 cycles Optional)
Unit Net Weight		About 0.5g (Straight PCB type without lever)

**G10 Series Micro Switch Ordering Instruction**

G10	P1	150	S	00	A	XX	TXXX
Switch Type	Electrical Rating	Max Operating Force at Pin Plunger	Terminal Type	Lever Type	Circuit code	Special Designator	Special Designator
G10 Series Micro-Switch	P1 ENEC/CQC 0.1A 48VDC/125VAC IE4 $\mu$ 40T85 UL/CUL: 0.1A 48VDC/125VAC	090 90gf Max	S Solder Terminals	00 NO Lever Pin Plunger	A SPDT	General	
	03 ENEC/CQC 1A/3A, 125VAC IE4 $\mu$ 40T85 UL/CUL: 1A/3A, 125VAC	150 150gf Max	P Straight PCB Terminals	01 Short Straight Lever 0.39"		A Gold Plated	Here means special designator letter, refer to product specification for details
		... Other	Q Snap in PCB Terminals	02 Std. Straight Lever 0.52"		B Only for low current	
			M Short Solder Terminals	03 Long Straight Lever 0.71"		12 Non-Halogen Material	
			R Right Angled PCB Terminals	05 Simulated Roller Lever 0.46"			
			L Left Angled PCB Terminals	07 Small Simulated Roller Lever 0.59"			
			K Long Solder Terminals	09 long straight lever			
			... Special Terminals	10 12.80mm Roller lever			
			... Special Lever	... Special Lever			

## Terminal Type

Terminal thickness: 0.6mm

Straight Solder Terminals	Straight PCB Terminals	PCB snap-in (clip) Terminals
Short Solder Terminals	Right Angled PCB Terminals	Left Angled PCB Terminals
Long Solder Terminals	Circuit Configuration	

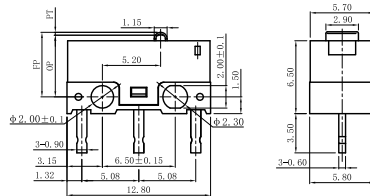
## Mounting Hole Dimension

Unit:mm

Mounting Hole Dimension	Mounting Hole Dimension of PCB Terminals
Mounting Hole Dimension of Right Angled PCB Terminals	Mounting Hole Dimension of Left Angled PCB Terminals

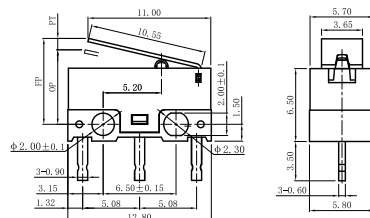
## Dimensions and Operating Characteristics

### G10□□-□P00A



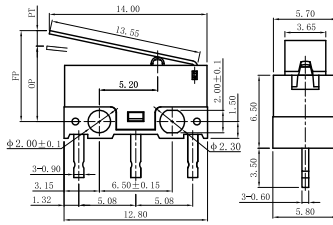
OF Max. (gf)	RF Min. (gf)	PT Max. (mm)	OT Min. (mm)	DT Max. (mm)	FP Max. (mm)	OP. (mm)
-090	90	15	0.65	0.2	6.0	5.5±0.3
-150	150	20				

### G10□□-□P01A



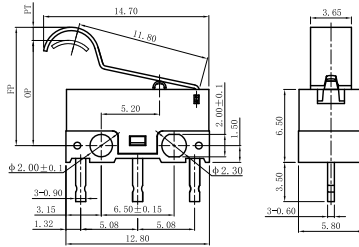
OF Max. (gf)	RF Min. (gf)	PT Max. (mm)	OT Min. (mm)	DT Max. (mm)	FP Max. (mm)	OP. (mm)
-090	40	6	2.5	0.3	0.6	8.0
-150	60	10				6.25±0.8

◆ G10□□-□P02A



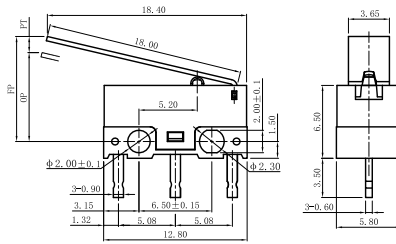
OF Max. (gf)	RF Min. (gf)	PT Max. (mm)	OT Min. (mm)	DT Max. (mm)	FP Max. (mm)	OP (mm)
-090	30	3.4	0.3	0.8	8.8	6.35±0.9
-150	50					

◆ G10□□-□P05A



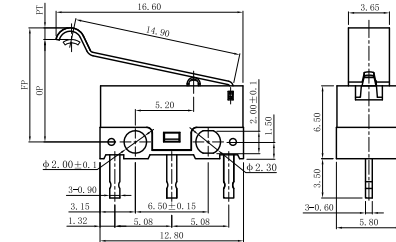
OF Max. (gf)	RF Min. (gf)	PT Max. (mm)	OT Min. (mm)	DT Max. (mm)	FP Max. (mm)	OP (mm)
-090	40	5	3.0	0.3	0.7	12.0
-150	50					

◆ G10□□-□P03A



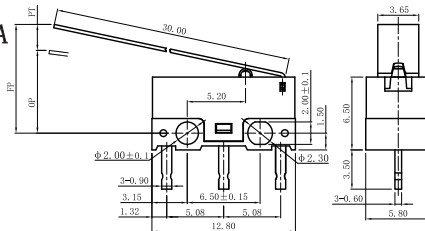
OF Max. (gf)	RF Min. (gf)	PT Max. (mm)	OT Min. (mm)	DT Max. (mm)	FP Max. (mm)	OP (mm)
-090	40	3	4.0	0.5	1.0	10.0
-150	50					

◆ G10□□-□P07A



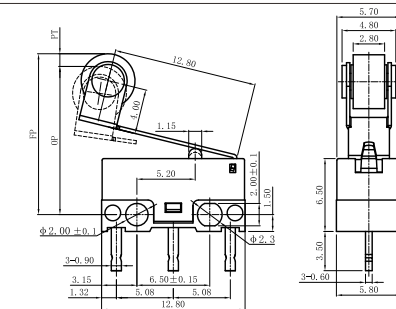
OF Max. (gf)	RF Min. (gf)	PT Max. (mm)	OT Min. (mm)	DT Max. (mm)	FP Max. (mm)	OP (mm)
-090	30	5	3.5	0.3	1.1	11.5
-150	50					

◆ G10□□-□P09A



OF Max. (gf)	RF Min. (gf)	PT Max. (mm)	OT Min. (mm)	DT Max. (mm)	FP Max. (mm)	OP (mm)
-090	15	2	6.9	0.4	2.5	14.0
-150	23					

◆ G10□□-□P10A



OF Max. (gf)	RF Min. (gf)	PT Max. (mm)	OT Min. (mm)	DT Max. (mm)	FP Max. (mm)	OP (mm)
-090	35	3	5.5	0.3	0.8	16.5
-150	50					